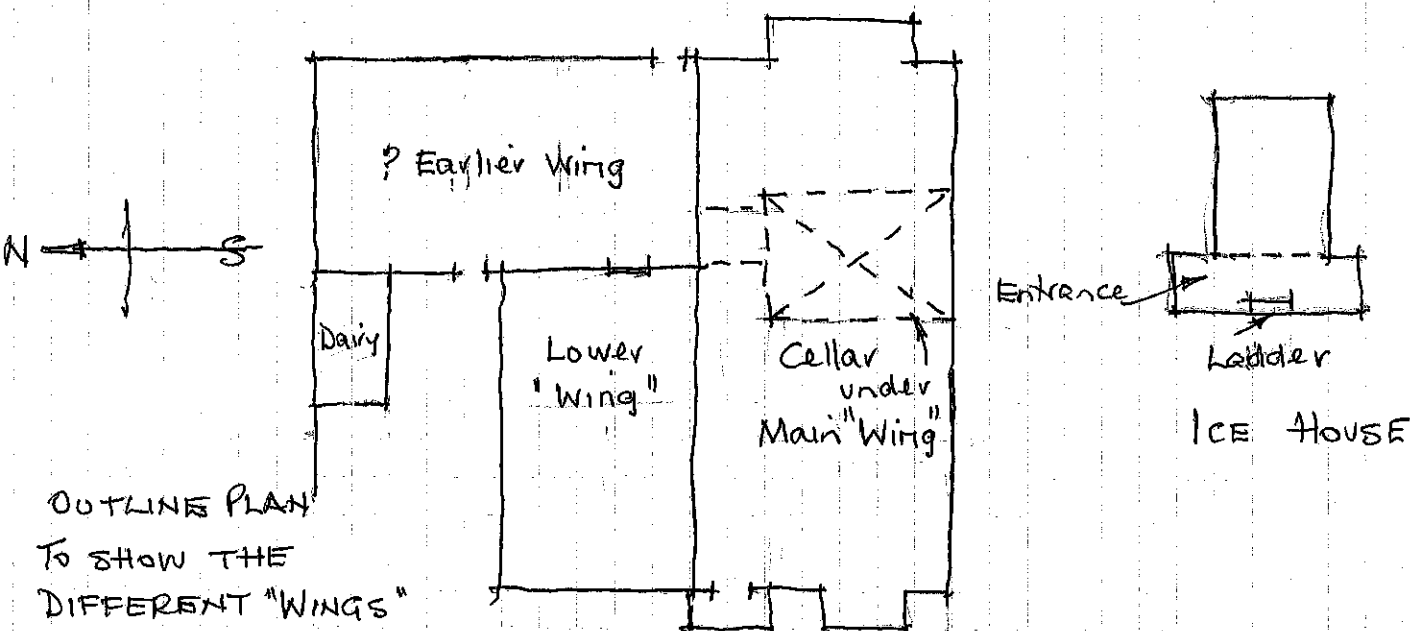


11/81



A dower house of 1830 built by Henry Drummond to replace a Regency villa. Burnt down in 1854, with only walls and chimneys remaining. Originally thatched, now tiled. Ironstone and sandstone with brick dressings. House faces West to entrance to Weston Yard. Main "Wing" contains principal rooms, lower "Wing" service rooms.

The plan is of two parallel "Wings" of different widths, with a wing at the back running North - this is thought to be part of the earlier house. It is the same height and approximately the same width as the smaller wing, and their roofs are joined and hipped as though they were the same build. However, a blocked window in the kitchen appears to contradict this. The main "Wing" to the South is gabled at both ends, with a cellar under part, which may be part of the earlier house. Chimneys are tall and decorative, "Pugin, Albury" type. Windows are low with vertical sliding sashes and shutters built into the face of the walls, not into the panes, as is usual. To ground floor shutters slide vertically.

Staircase rises beside the hall, with twisted balusters. A partition under the stairs, recently removed, consisted of precast plaster slabs reinforced with bamboo. Semi circular arch to stairs, 4-centred arch to back corridor. Unusual architraves - flat, with ogee projections.

Attic roof originally king post, perhaps for storage, but struts removed later. Within attic floor was quantity of walnut shells, perhaps for insulation.

Ice House, or Game Larder. Ironstone with vaulted brick roof, completely under ground. Entrance approached by ladder, possibly once roofed over. ? Cellar of earlier building or hiding place for contraband?

Traces of a medieval knot garden appeared in the lawn in 1976

