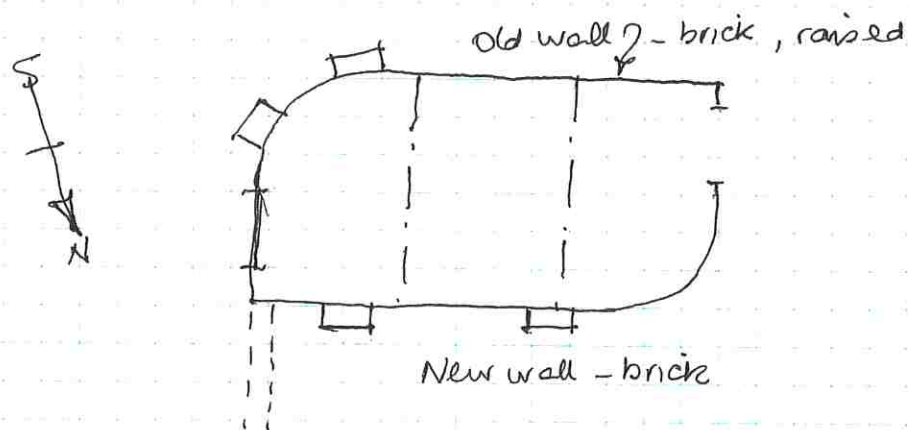


10/85



An early 20c. brick and corrugated iron structure, built on to a yard wall, the house spent brewer's grain used as cattle feed. Brick piers externally

Built within curve of old yard wall to South and East, completed by new wall to N. and West. Roof of boarding, covered with corrugated iron. Floor of concrete. Walls rendered and white washed inside.

Grain stored inside, loose, well trampled down. Holes in wall for liquid to drain away

