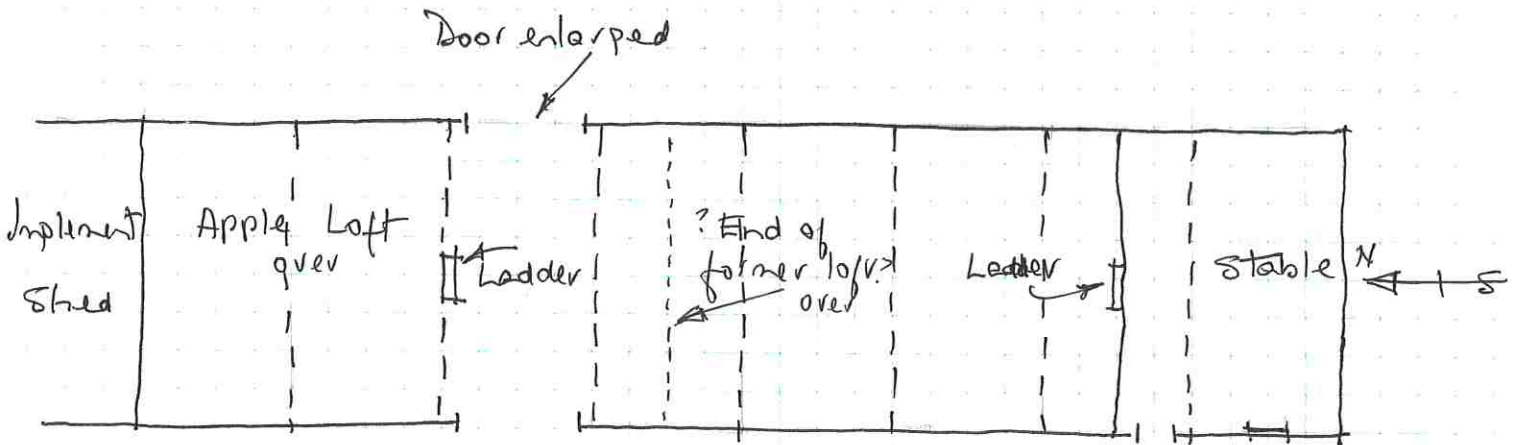


10/85

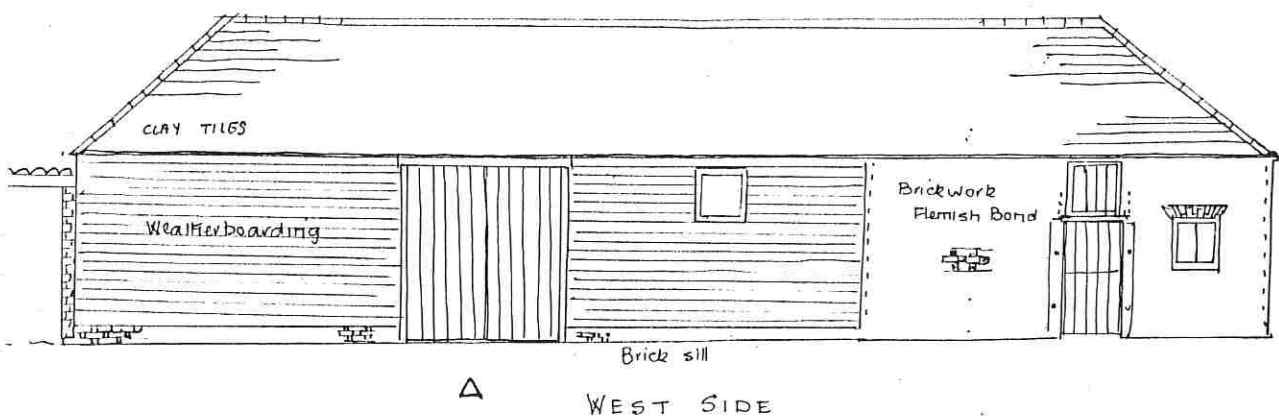


Late 18c. eight bay barn, partly brick built, partly timber framed. Hipped clay tile roof. Originally floored for most of its length. One end partitioned off for stables and hay loft. Other end retains slated floor of apple loft. They have replaced earlier barn

Brick walls 13 1/2" (35cm) thick are built of Flemish bond outside and English bond inside. End walls and part of front are weatherboarded on timber frame on brick sill. Roof has clasped purlins with vertical queen posts, collars, ties and ridge board. They re-used timbers.

Stable has tyings for two horses. Loft over approached by ladder from barn and loft door over stable door..

Modern implement shed replaces a former granary with cart shed under. It is of five open bays of brick with corrugated roof.



0 1 2 3 4m 1:100

J. HARDING 10.85