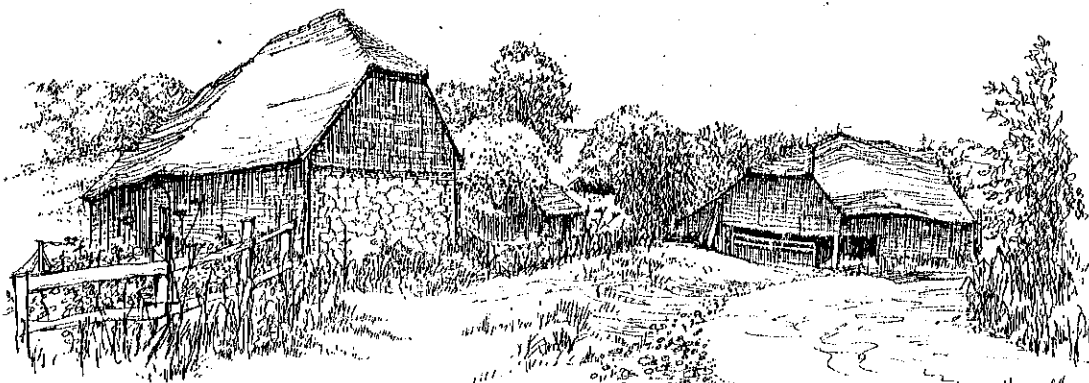


A late 16c. 3 bay barn, probably half hipped, with two bays added later at each end, probably joined to a free standing stable, timber framed, weatherboarded, on stone plinth, with half hipped tiled roof.

Original barn of high quality oak, pegged joints, shaped joint posts & queen posts (vertical and curved), clasped purlins, diminishing principal rafters, scratched carpenter's marks. Large doors 15 (number) yard, those to North may have been added.

End bays of lesser quality, taking Queen struts to clasped purlins, no joint posts, principal rafters do not diminish; ridge board. 17c - early 18c.

Stable possibly 1650, strap posts, heavy tie beams, rafter's braces, & arching braces up to purlins. Pegged joints. Chiselled carpenter's marks. Timber framed, weatherboarded on ironstone plinth. Two single doors, two pitching eyes & windows in East wall boarded up. May not have been built for horses. Roof between stable and barn is later. Buildings added to South of West end additions later removed.



Shamley Green: Upper Woodhill Farm.

Alison Millane.