

Formerly known as "Bowbricks". Mid 19C. Stone cottage, tiled.
2 rooms downstairs, lean to Dairy and Earth Closet. Later additions.

Built of irregular sandstone blocks, galleted with ironstone, brick dressings & moulded brick plinth. Heavy carved bargeboards, all different.

"Gothick" appearance. Iron windows, leaded lights, brick arches.

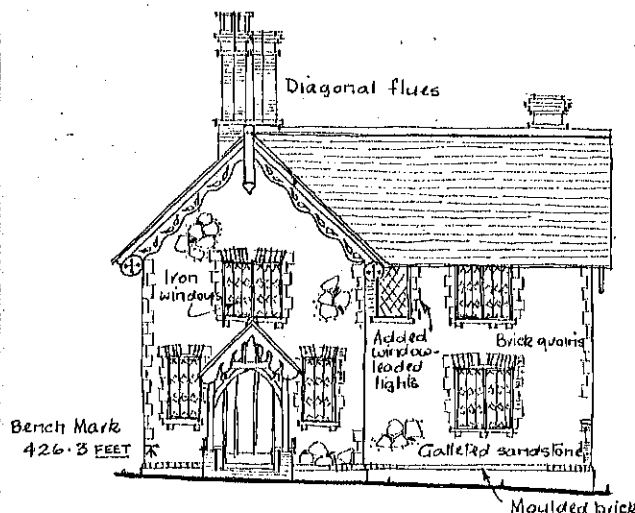
Gothick timber porch with pears. Brick chimneys, flues at 45°.

They have been pigstye attached to house at back, with two cows in shed in garden.

Parlour had brick floor, plastered ceiling, picture rail. Kitchen had partly brick partly tiled floor. Down three steps to Dairy.

Stairs closed off by door. Shelf for oil lamp in corner.

Dairy later built up to provide third bedroom.



SOUTH EAST FRONT