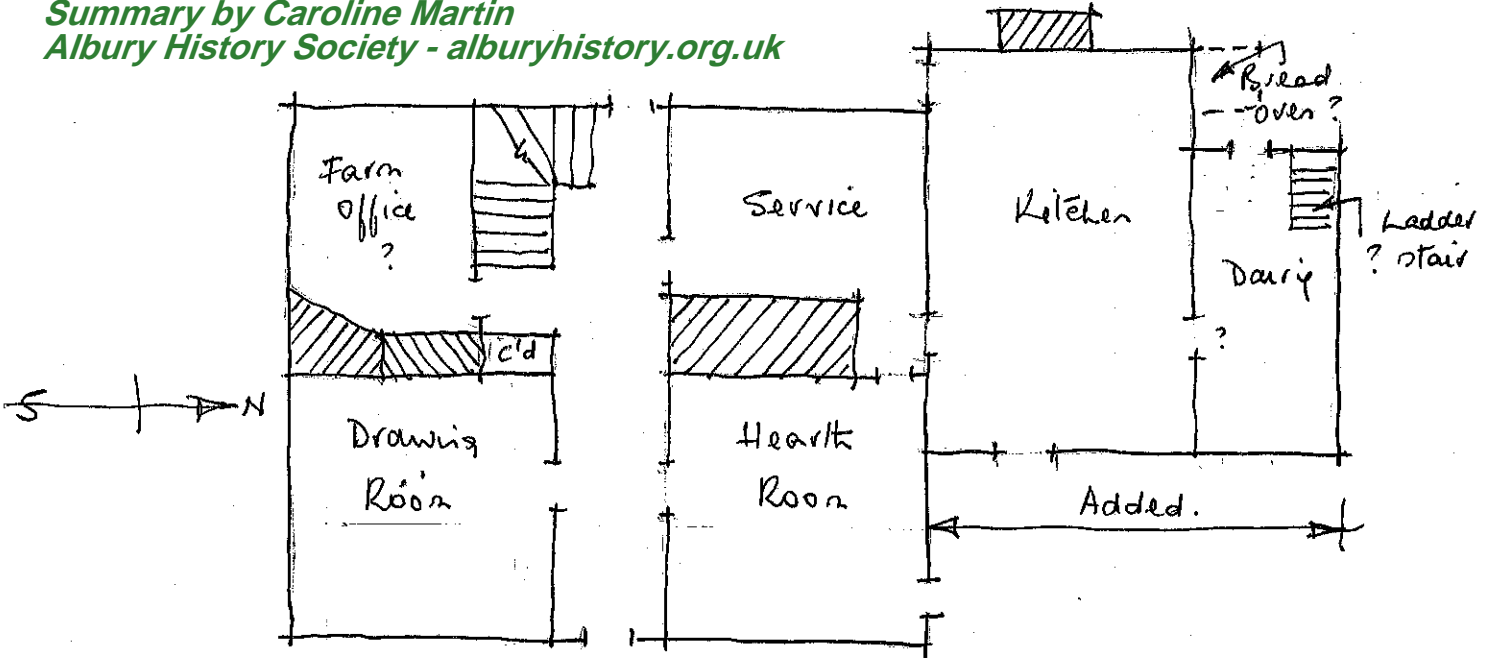


Summary by Caroline Martin
 Albury History Society - alburyhistory.org.uk



An early 18C. brick & tiled house, probably on site of an earlier house, the main block three storeys and half cellar, double pile with hipped roof and two internal chimneys; N. wing added shortly after to provide new kitchen & accommodation for farm hands over, 2 storeys only.

1720-25, probably replacing earlier house - many reused timbers and stone plinth, galleted. Built into hillside, ∴ ½ cellar to South, first floor entrance for farm hands' quarters to North, later central door, 5 windows per storey (2nd floor central one = dummy in cupboard). Moulded brick cornice, projecting string courses. Flat projecting canopy over door added later.

Windows, replaced in 19C., like 18C. sashes, have segmental arches. Blank openings to "windows" on S. 1st & 2nd floors. Casement windows at back. Flemish bond. Blue headers. Kitchen block, brick, Flemish bond, smaller bricks, brick dentil cornice, projecting string course, half hipped roof.

Downstairs rooms have shutters, 2 panelled doors. Open well stair, deal balustrading, turned balusters, large drops, closed string, Queen strut and King post roof. Re-used timbers including sill of diamond mullioned window. Staggered butt purlins. False ceilings.

Kitchen block has inclined Queen struts, staggered butt purlins, spine beam chamfered with lamb tongue stops.

