



# TREETOPS HOLIDAY CAMP

IN THE HEART OF THE SURREY PINE HILLS



## TREETOPS HOLIDAYS

A HOLIDAY at "Treetops"—600 feet up in the Surrey hills—a time to be remembered, not only for the exquisite beauty of its countryside but also for that spirit of sociability and absence of formality that breaks down the barriers of reserve and ensures a natural and joyous holiday.

"Treetops" accommodates a hundred guests; everything is arranged for the comfort of visitors and here is every facility for the ideal holiday, for the family, a party of friends, or for those who have to take their holidays alone, to these last it makes a special appeal, for "Treetops" is a place to find friends and kindred spirits. To all who desire a holiday of outdoor sports and activities, with jolly social evenings to complete the perfect days and equally to those who seek quiet relaxation "Treetops" makes its appeal.

A spacious and well-warmed recreation hall with an excellent floor provides facilities for dancing and social evenings. There is a small billiards table, table-tennis, darts, plenty of easy chairs and books, in fact everything we can think of for your comfort and pleasure.

### WHERE "TREETOPS" IS.

This delightful camp is situated on the edge of Winterfold Heath, forming a part of Hurtwood. It lies three miles south of the pretty village of Shere which is mid-way between Dorking and Guildford.

Thirty miles from London in the heart of the Surrey Hills, far from the noise and turmoil of town, in surroundings of incomparable beauty.

Pine woods almost to your bedroom window and air, laden with the scent of pines and heather, bring you renewed health and vitality.

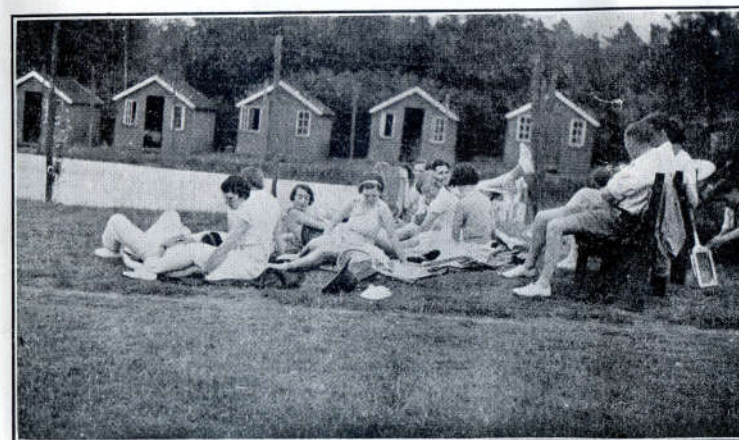
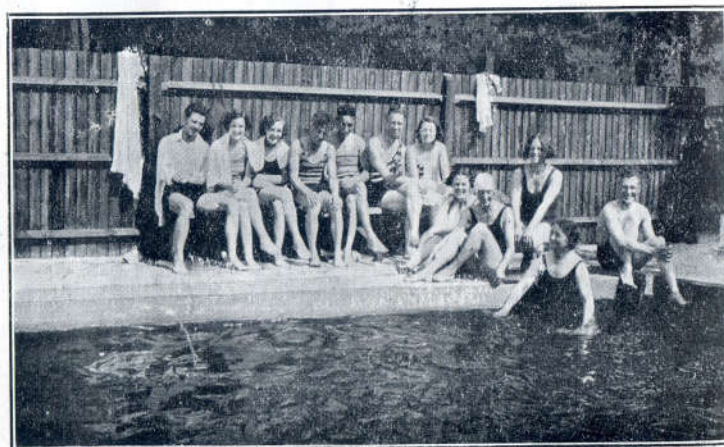
### A HINT ON DRESS.

Don't burden yourself with unnecessary luggage. Flannels or shorts, open shirts, simple frocks, a mackintosh and good walking shoes are the custom. An electric torch for night walking will prove useful.

*Facilities for travel (see page 4) are, at the time of publication, correct, but we cannot accept responsibility for any subsequent alterations due to war conditions.*







#### BATHING.

Among the trees is a small private bathing pool; here you may bathe and sun-bathe to your heart's content—don't forget your costume.

#### OUTDOOR GAMES.

Croquet, putting and a meadow for impromptu games; see-saw and swing for the kiddies and a hard tennis court. (Players are reminded to bring racquets, shoes and balls.)

#### RIDING.

Riding is very popular here. The miles of open country surrounding "Treetops" being ideal for this healthy sport. Horses are obtained from a neighbouring stable, the charge being 4/6 per hour. A riding master will accompany two or more learners at no extra charge.

Never mind if you have never ridden before. You will find it most healthy and fascinating. Special attire is not essential, although, of course, breeches and boots are an advantage.



## All Essential Details are on this Page.

Please bring all ration books if staying longer than 4 days.

### HOW TO GET TO "TREETOPS."

From London one can come by Rail from Waterloo either to Guildford or to Dorking (half-hourly electric service), or from London Bridge, Cannon Street, or Charing Cross to Gomshall, or by Coach from London to Guildford. THE QUICKEST WAY IS TO GUILDFORD AND THENCE BY BUS TO FARLEY GREEN (1 mile from "Treetops"). Times of local Bus are given hereunder.

### BUS SERVICE.

Our nearest bus service is the Tillingbourne Valley Bus. This runs an hourly service from Guildford to FARLEY GREEN, starting from ONSLOW STREET (near Station), or can be picked up at QUARRY STREET (where all services of buses stop).

Guildford to Farley Green, 7.34 a.m. and every hour to 8.34 p.m. Farley Green to Guildford, 8.23 a.m. and every hour to 8.23 p.m. Sundays: Guildford to Farley Green 10.34, 12.34 and every hour afterwards.

Should you come via Dorking buses run a half-hourly service between Dorking and Guildford. Alight at Albury Park Gates for "Treetops" (2½ miles).

### CONVEYANCE FROM STATION OR BUS.

Visitors can be met at Gomshall, at Albury Park Gates, or at Farley Green if desired.

If not previously arranged, this can be done by (a) \*telephoning from the Booking Office at Gomshall Station or (b) telephoning from Guildford before catching bus, so that car can meet bus at Albury Park Gates or Farley Green.

Tariff for car (6 seats) is given under:—

Gomshall Station	Albury Park Gates	Farley Green
5/-	4/-	2/-

\* This, of course entails a short delay until conveyance arrives.

### MOTORISTS AND CYCLISTS.

"Treetops" is about half-way between London and the South Coast. If travelling via Dorking, take the Dorking to Guildford road for six miles and turn left immediately entering Shere, straight up the hill. Turn sharp right at the top (don't go over the railway bridge), under Railway Arch, and past "Holt's Store," and up the Hill to Farley Green. At Farley Green take the left road marked on signpost "Smithwood Common," and then keep right to "Treetops."

If you come via Guildford or Clandon, come over Newlands Corner and take the road to the right just past the Silent Pool to ALBURY PARK GATES. Then bear left (marked on signpost "To Peaslake"), and keep straight on (do not turn left again for Peaslake), past gravel pit, over level crossing to "Holt's Stores," and then follow directions given above.

### GARAGE.

Cars under cover	...	...	3/6 per week.	(open parking 2/6)
Motor-cycle and Side-car	...	2/6	"	" ( " " 1/6)
Motor-cycles	...	2/-	"	" ( " " 1/-)

### TERMS.

Terms include all meals and the free use of all facilities, including the tennis court and billiard table (excluding riding). No allowance is made for meals taken outside the premises, but visitors wishing to go out for the day will be provided with sandwiches. Packed teas are not provided.

	Per week.	Per day.	Week-end (Sat. tea to Sun. tea inc.)
Adults	50/-	8/-	10/-
Aug. 3rd to 17th	52/6		
Children under 12	35/-	6/-	8/-
Children under 6	30/-	5/-	7/-
Single sleeping accommodation (when available), 5/- per week per person extra (1/- per day).			
Sleeping accommodation in the house, 5/- per week per person extra (1/- per day).			
Children under 2 years cannot be accommodated.			
It is not always possible to accommodate dogs, and permission must first be obtained.			

### OPTIONAL EXTRAS.

Early morning tea	...	...	2d. per cup.
After dinner tea or coffee	...	...	2d. per cup.
Hot baths	...	...	9d.
Collection of luggage from Gomshall Station	...	...	9d. per package.

### BOOKING.

Holiday bookings during July, August and September must terminate on a Saturday, unless otherwise arranged, and during these months visitors should arrive after dinner on Saturday.

BANK HOLIDAYS:—Easter, four full days, £2; Whitsun, three full days £1 10; August, see August terms above (minimum booking one week); Christmas, 10s. per day.

When booking, it is of great assistance to us if you can mention the meal to which you expect to arrive.

### LUGGAGE IN ADVANCE.

This should always be sent by Rail to Gomshall Station, advising us by post. **Do not send by Carrier, as they do not deliver nearer than Guildford.**

### DEPOSIT.

Holidays of a week or longer	...	10/- each person
Public Holidays (Easter, Whitsun, etc.)	10/-	" "
Periods of less than one week	2/6	" "
(except Public Holidays)		

To obviate any possibility of misunderstanding, will you please note that your stay is not booked when we reply to your enquiry and offer the desired accommodation. A confirmation from you, accepting this, and enclosing deposit, and an acknowledgement of receipt from us is necessary to complete a booking.

All enquiries should be accompanied by a stamped addressed envelope.

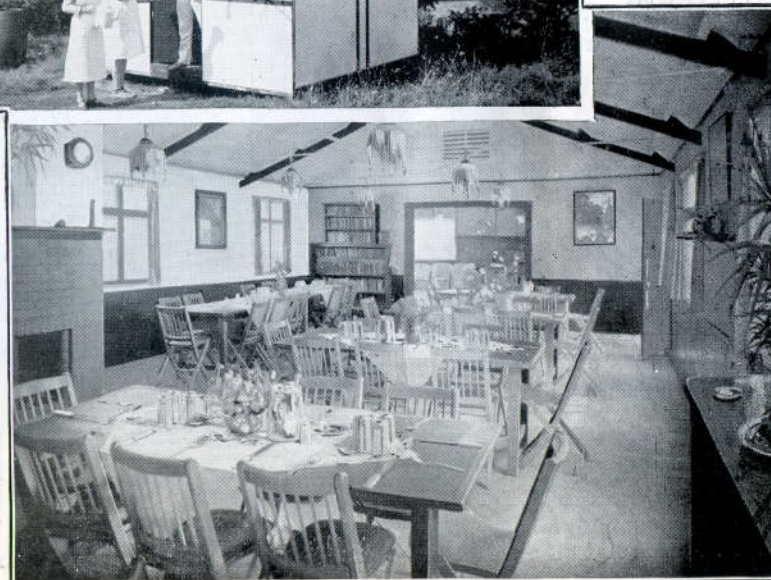
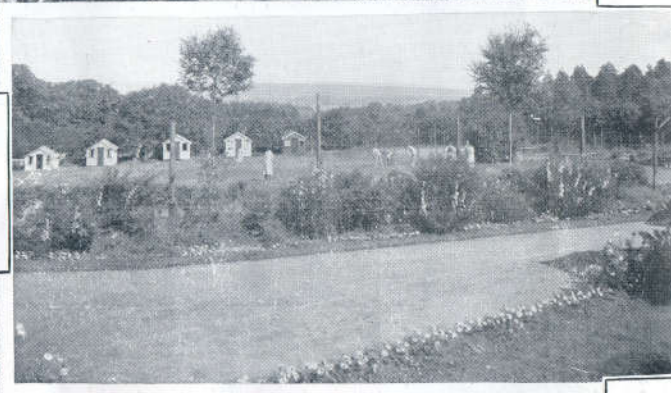
## TREETOPS HOLIDAY CAMP

FARLEY HEATH, NR. ALBURY, GUILDFORD, SURREY.

PHONE: SHERE 107

TELEGRAMS: TREETOPS, ALBURY, SURREY









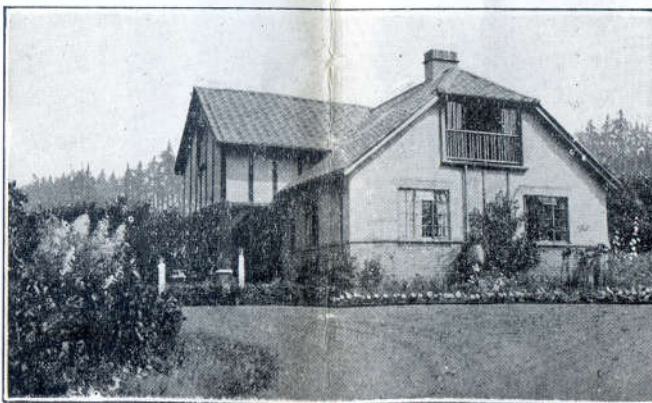
Sports Tournaments, Amateur Concerts, Social Evenings, River Trips and Rambles are arranged, but nobody will mind if you have come for a "quiet holiday" and do not wish to join in.

#### SLEEPING ACCOMMODATION.

Sleeping accommodation is provided in well-built garden bungalows, double-lined, and artistically decorated, each containing two or three single beds (according to size of bungalow), and simply but adequately furnished with locker, basin and jug, hooks, shelves, etc. Beds are provided with mattresses, plenty of blankets, bed linen and feather pillows. Electric light in every bungalow.

There is a limited amount of sleeping accommodation in the house for which a small extra charge is made (see page 4).

Sleeping apartments, both in the house and in the garden bungalows, are cleaned and prepared for new arrivals, but after taking possession, visitors are expected to attend to the internal order of their own rooms. They are also requested to bring soap and towels. It is by adopting this arrangement that we are able to dispense with a large staff and as a consequence, offer our guests the advantage of very moderate terms.



MEALS.—Now to that all-important question. After all, a holiday can be made or marred by the attention paid to the "inner man." "Treetops" is a place where keen air and out-of-door recreation brings one back at meal times with a real holiday appetite. We know this, and prepare accordingly.

Food in plenty, wholesome and tastily cooked, is the rule. The vegetables come from our own kitchen gardens.

Times of meals are as under:

Rising Gong	...	...	8. 0
Breakfast	...	...	8.30
Dinner	...	...	1. 0
Tea	...	...	5. 0
Supper	...	...	8.30

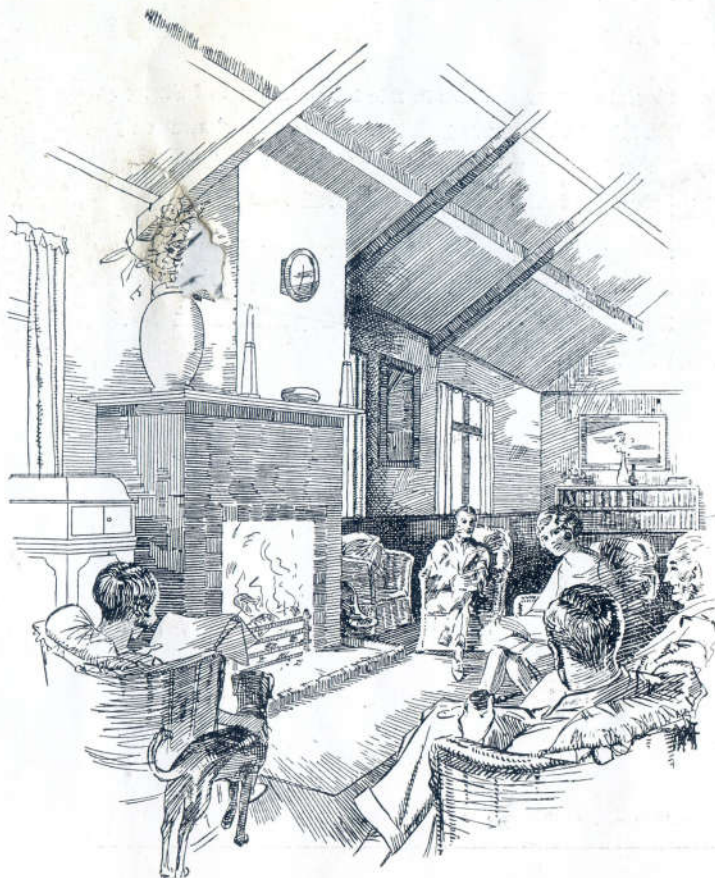
As an extra, an early morning cup of tea can be brought to your bedroom if desired.

The Recreation Hall closes at 11.15 p.m. and no parties are allowed in the chalets after that time.

# TREETOPS HOLIDAY CAMP

## IN THE HEART OF THE SURREY PINE HILLS





#### FAMOUS BEAUTY SPOTS.

Surrey lovers to whom the wild grandeur of the Surrey Hills is already endeared will need little introduction. To those not yet acquainted with this wonderful country, its pine woods, heather-clad hills and restful glades will be a constant source of delightful surprise.

The Pilgrims' Way, St. Martha's on the Hill, Newlands Corner, the Silent Pool, Pitch Hill, Holmbury St. Mary, and many other places of historic and scenic interest are within walking distance. The ancient and picturesque town of Guildford, county town of Surrey, with its Castle and Keep, is easily reached by 'bus, running hourly from within a mile of "Treetops." Here also, boating on the Wey and bathing may be indulged in.

## Winter Week-Ends.

From the end of October to Easter "Treetops" is open at week-ends only. Sleeping chalets are provided with heating stoves if required, and dining and recreation rooms have large fires quite adequate for the coldest weather. All bedding is stored in a constantly heated drying room until wanted. Incidentally (the English climate being what it is) these facilities are sometimes very welcome during the actual holiday season, making "Treetops" eminently suitable for spring and autumn holidays.

Good walking, riding, tennis, dancing, exhilarating-air-and-good company provide a real winter tonic whatever the weather.

## TREETOPS HOLIDAY CAMP

FARLEY HEATH, NEAR ALBURY,  
GUILDFORD, SURREY.

---

---

*Telephone : Shere 107.*

*Telegrams : Treetops, Albury, Surrey.*

---

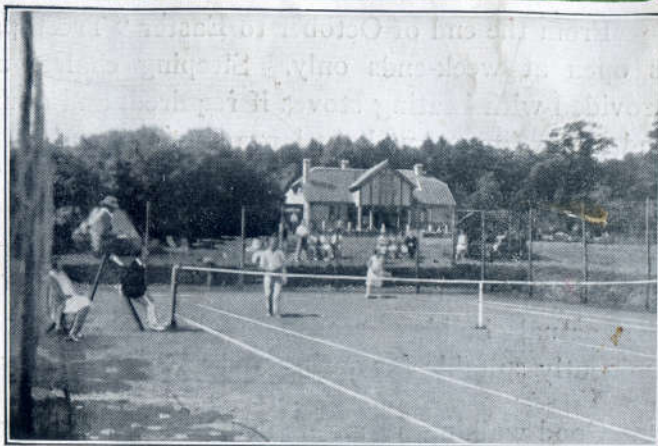
---

*Resident Managing Director :*

*A. S. Merritt.*



## Bouquets from Past Visitors.



"The wonderful country rambles in this beautiful part of Surrey, with its wonderful scenery and health-giving qualities, are only equalled by the enjoyable pastimes and friendships which makes 'Treetops' unique as a holiday home."—W. M. Adamson, M.P.

"I can sincerely say that during a very long experience of such events as we held last week, not one has come up to 'Treetops.'" (Sgt.), Jas. Reeves, Secretary, Educational Dept., Royal Arsenal Co-op. Society, Ltd.

"'Treetops' is an ideal place, and is more than the booklets say it is. We have thoroughly enjoyed our visit, and shall certainly come again."—Eunice Bloomfield.

"'Treetops' is first rate. The country is the best in the Home Counties; the food good; the staff genial and welcoming. More important than these, you get to know people quicker there—and like them better—than in any other holiday place I am acquainted with. Perhaps it is the jolly things you do with them; tennis, horse-riding, moonlight walks; perhaps something in the atmosphere of the place which breaks the ice between people and takes the starch out of them. Anyway, they are ten times as nice as they are in London. . . ."

—C. E. M. Joad, Hampstead.

