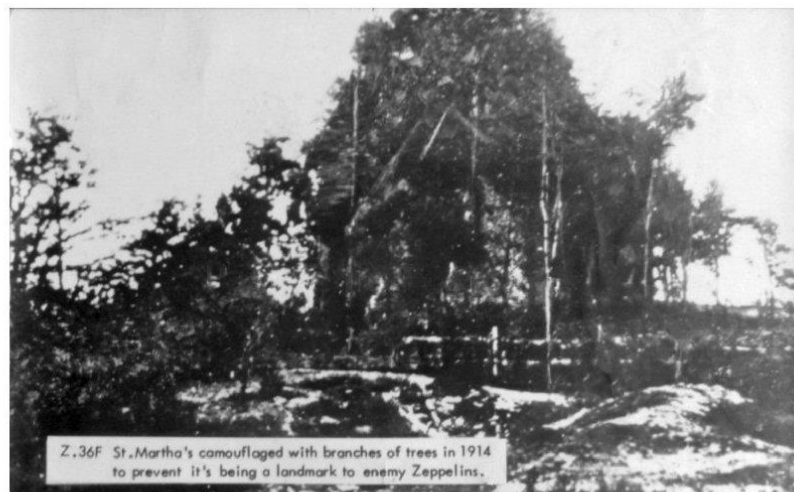


## ALBURY HISTORY SOCIETY - [alburyhistory.org.uk](http://alburyhistory.org.uk)

**St Martha's near Guildford 1914-1918, camouflaged with branches of trees in 1914 to prevent it's being a landmark to enemy Zeppelins, Z.36F.** The labelled 1914 seems premature, since Amabel Strachey/Clough Williams-Ellis wedding photos on 31<sup>st</sup> July 1915 show no camouflages and the first Zeppelin raids were on 13<sup>th</sup> October 1915.



**St Martha's Church camouflaged with fir trees by workers from Albury Estate during World War I to stop its use as a landmark by Zeppelins**



**A postcard where it seems enhanced roof outlines were added - in the wrong positions**