

Surrey Archaeological Collections, VOL. XXIX, 1916

A Saxon pot found on St Martha's Hill near Guildford by the son of the vergger of St Martha's Chapel, on the site of a supposed pre-Christian burying place, was loaned to Guildford Museum by Albury Rector Rev. Henry Ernest Crowley.

II.

ADDITIONS TO THE MUSEUM.

Saxon Pot.

A very interesting Saxon Pot, quite perfect, about $2\frac{3}{4}$ inches high, has been found on St. Martha's Hill, near Guildford, by the son of the vergger of St. Martha's Chapel, on the site of a supposed pre-Christian burying place.

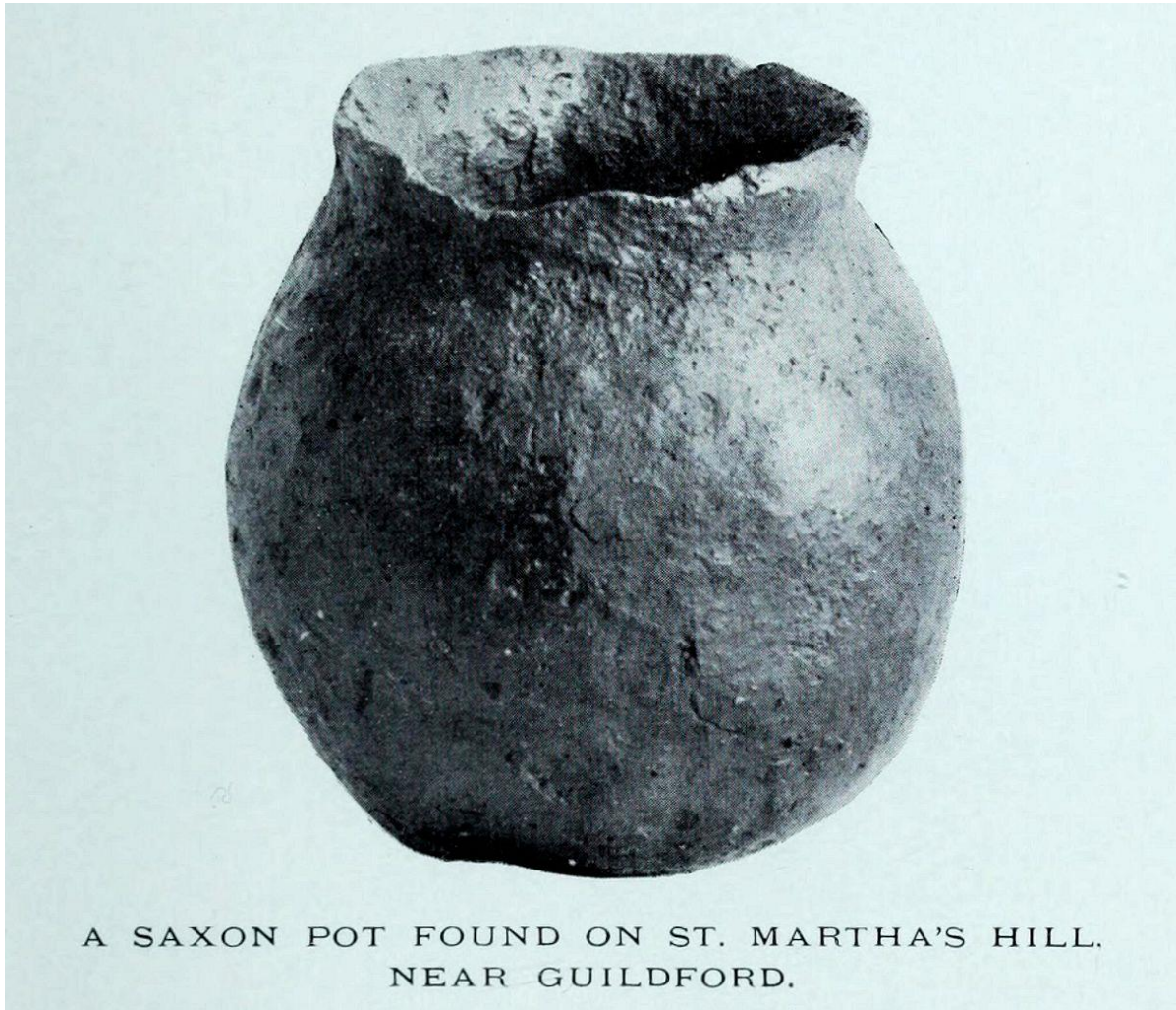
Mr. Reginald A. Smith, F.S.A., of the British Museum, to whom it was submitted, says :—"It is hand made, and the base rounded off

NOTES.

153

as in the cinerary urns of the period, say 5th or 6th century. It is small, even for an accessory vessel in an unburnt grave, and if associated with a skeleton, the date more probably would be 6th than 5th century."

The pot has been loaned to the Museum by the Rector of Albury (Rev. H. E. Crowley).



A SAXON POT FOUND ON ST. MARTHA'S HILL,
NEAR GUILDFORD.