

The Poultry Industry of the United Kingdom in Pictures.

XVI.—SURREY RABBIT BREEDERS.



Lady Victoria Percy, Northfield, Albury, Guildford, Surrey, has a most interesting Chinchilla Rabbit Farm, one of the most important features of which is the Open-Air Long Rabbit House, a corner of which is shown in this picture. The House is about 180 feet long, with the Hutches arranged back to back, and the sides being of wire netting only.



One of the important points about Rabbit Keeping lies in the fact that it may be very successfully carried on in limited spaces, such as afforded by many backyards, as in the case of Mr. E. C. Richardson's backyard, as shown here. It is at Ecclesbourne, East Byfleet, Surrey.

LADY VICTORIA PERCY'S NORTHFIELD CHINCHILLA RABBIT FARM IN ALBURY

**Text in The Journal of the National Poultry Institute /
Harper Adams Utility Poultry Journal, Volume 11, 1925**

Page 380

Lady Victoria Percy, Northfield, Albury, Guildford, Surrey, has a most interesting Chinchilla Rabbit Farm, one of the most important features of which is the Open-Air Long Rabbit House, a corner of which is shown in this picture. The House is about 180 feet long, with the Hutches arranged back to back, and the sides being of wire netting only.

Page 388

EDITORIAL

...rabbit breeders from Surrey, whose rabbitries feature this section this month, fall within the class of those who have done much toward promoting commercial rabbit culture along safe, sane, and sound lines.

CHINCHILLA RABBIT FARM

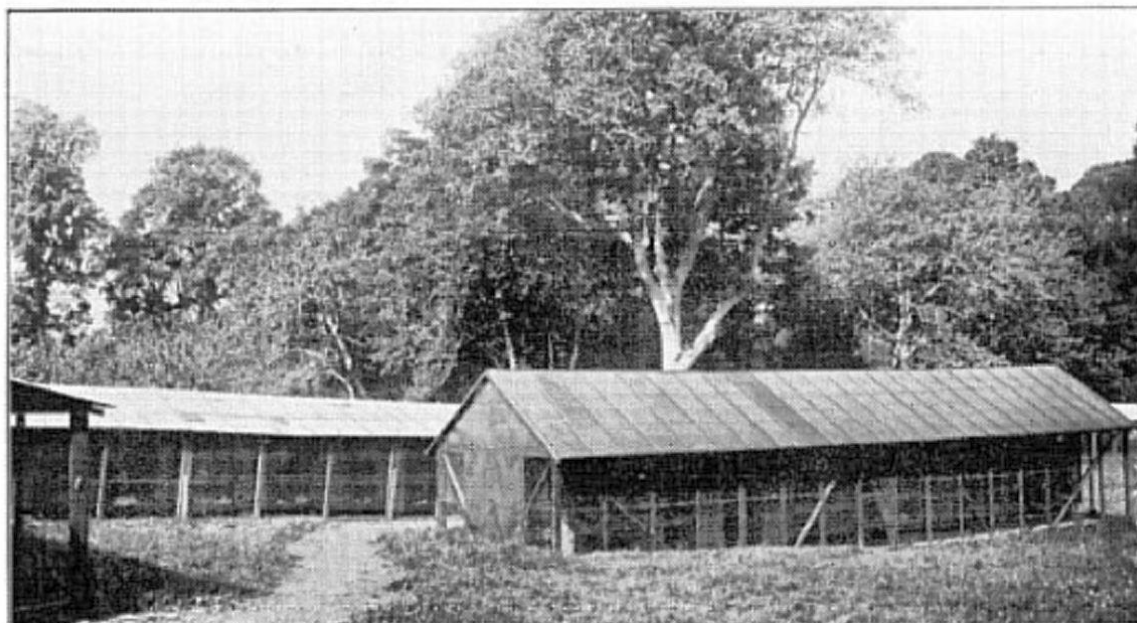
Lady Victoria Percy has developed a most interesting and important Chinchilla Rabbitry at Northfield, Albury, Guildford, Surrey. The picture from Lady Victoria Percy's farm points out at once one of the most important features of the place. It shows a small section of one of her Ladyship's rabbit houses, built on the open air system, the hutches being arranged back to back, the sides of the house being wire-netting only. This particular house is about 180 feet long, and does, as one would naturally expect, house a tremendous number of Chinchillas. Her Ladyship has five other smaller rabbit houses, each being from 50ft. to 60ft. in length. Many rabbit keepers are at present very much interested in determining the relative efficiency of various types of rabbit houses. Some, as is commonly known, prefer to have the rabbit hutches built within walled buildings. Some advocate the open-air hutches, such as shown at Lady Victoria Percy's Chinchilla Rabbit Farm, and some prefer the small

movable Morant-type hutches. Undoubtedly there are more than one or two satisfactory methods of housing rabbits. It might not be amiss to point out here that the Rabbit Department at the National Institute of Poultry Husbandry is beginning a series of experiments on various methods of housing rabbits, and hopes to do its share in furnishing information upon this point. Lady Victoria Percy has entered upon her rabbit breeding work with the firm purpose of attempting to establish Chinchilla fur production as a sound business undertaking. Her Ladyship appreciates the fundamental importance of selection and careful breeding and mating in the production of quality furs. This Chinchilla rabbit farm is steadily increasing in size, having been built by the joiner and carpenter on the place. It is interesting to note that her Ladyship has received, and is receiving, many orders for the hutches which are built on the place. The business, together with the demands of an increasing farm, warrants the constant employment of a carpenter and joiner. Lady Victoria Percy at present has approximately 1,500 head of beautiful Chinchillas, all of which have been bred for several generations on that farm. A particularly interesting feature of Lady Victoria Percy's rabbit business lies in her Ladyship's attempt to develop the sale of made up furs. It is the custom of this farm, however, to sell furs either raw-dried, dressed, or made up. It is undoubtedly a step forward for a rabbit fur farm to so develop as to be able to sell the furs in whatever state or condition the demand may call for.

MR. RICHARDSON'S RABBITRY

Mr. E. C. Richardson, chairman of the Fur Board, has, of course, been well known for some time to breeders of rabbits in this country. The picture which Mr. Richardson kindly lent for the purposes of this section of the Journal indicates the possibility of developing rabbit keeping as a back-yard proposition by many people who find that their back-yards at present are neither attractive nor productive, and who desire to add to their present income by establishing, if possible, a profit-making side line in the back-yard. I would not indicate by this that Mr. Richardson's venture in rabbit breeding is a back-yard proposition. It is really very far from that. The particular view which he sent, however, offers an opportunity to suggest the line of thought which I have just mentioned. Mr. Richardson's rabbitry has been convinced of the actual profit-making possibilities of rabbit culture. He says that in so far as there is no regular plan about his rabbitry at all, the general idea has been to

place two stacks of hutches, facing each other, and at right angles to a hedge. Over the stacks are fixed sloping roofs, very cheaply and efficiently made of frames covered by a sort of sandwich in “Pluvex” between two layers of wire netting. The hutches themselves are very plain in type, with no partitions or inside contraptions of any sort. The kindling does, however, in all cases, [sic] are provided with properly-designed nesting boxes, which allow the does to get in and out easily, but retain the babies within the nest until they are big enough to...



A corner of Lady Victoria Percy's Chinchilla Farm, which is ideally situated in a sheltered vale. There are seven houses, and the one shown in the foreground is one of the smaller ones.

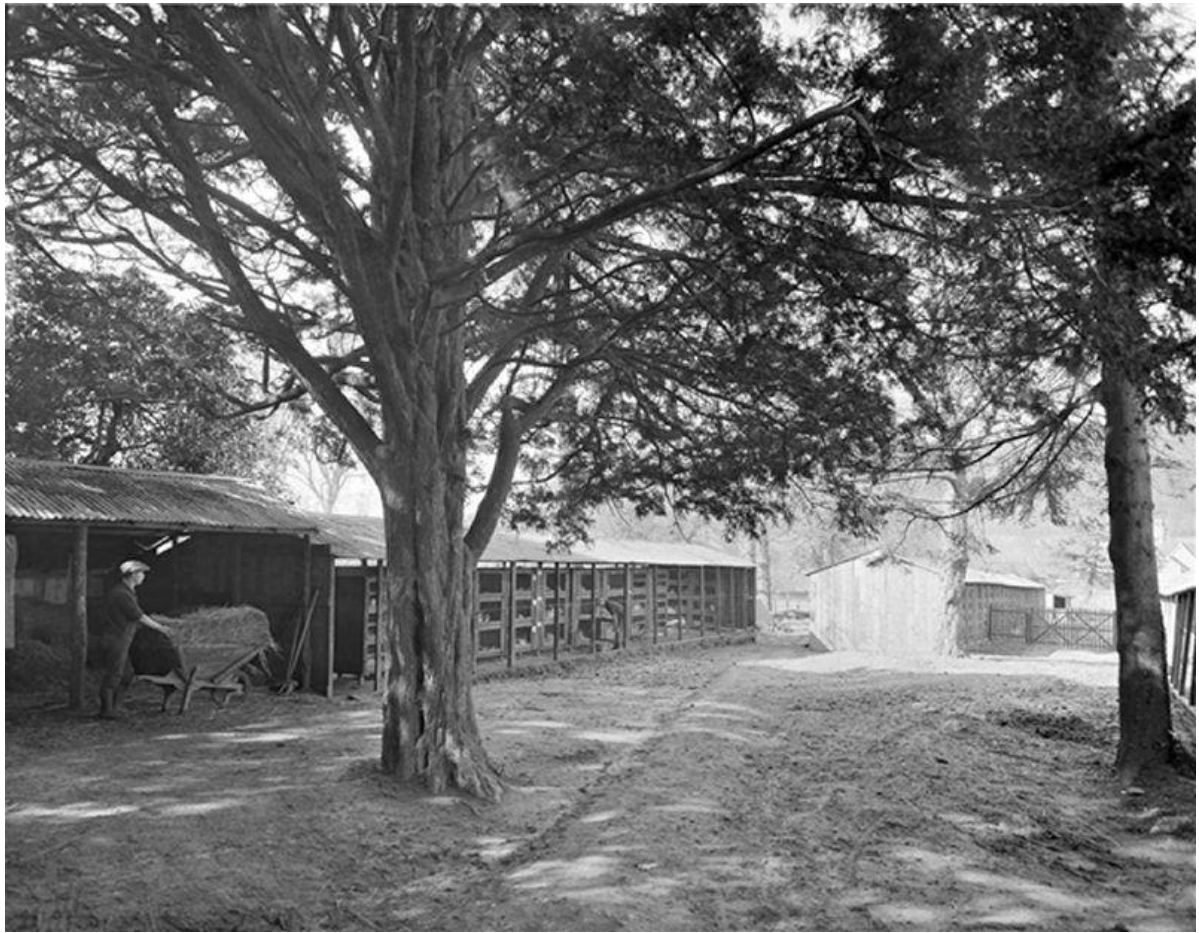
<p align="center">Northfield Chinchilla Farm ALBURY, GUILDFORD, SURREY (ESTABLISHED 1923).</p> <hr/> <p>Lady Victoria Percy offers first-class breeding and exhibition stock. Large numbers available. Inspection Invited.</p> <hr/> <p>HUTCHES OF ALL DESCRIPTIONS MADE PROMPTLY TO ORDER AT MODERATE PRICES. ILLUSTRATED LIST ON APPLICATION. Manager: J. BUSHBY.</p>	
<p align="center">CHINCHILLA - REX First Class Stock for Sale.</p>	
<p>Lady Victoria Percy, Northfield, Albury, Guildford.</p>	<p>Manager : J. Bushby.</p>

LADY VICTORIA PERCY recommends LAD, 19, for outdoor employment & experience rabbit farm and pigs. — Northfield, Albury, Guildford.

Surrey Advertiser, 16/2/1929

LADY VICTORIA PERCY very highly recommends Chauffeur-Handyman; used to management of poultry and other livestock; wife willing to help in house, two children. — Bushby, Yew Tree Cottage, Albury, Guildford.

Surrey Advertiser, 2/9/1933



Northfields in August 1976