



12-1-82

Two injured in Albury crash

A NUMBER of passengers had a lucky escape when the bus they were travelling in made an unscheduled stop — in the village hall, Albury.

The accident happened early on Tuesday morning when the bus driver swerved to avoid a collision with a car on the icy road.

One passenger and the bus driver were hurt when the bus embedded itself into the wall of the hall annexe in The Street, Albury.

A police spokesman said they feared the wall would collapse when the bus was removed, but villager Mr. Hugh Lee said that this had not happened.

ALBURY residents are being warned to expect a hefty rate rise next spring because they may have to help pay towards the cost of rebuilding the village hall.

The warning came from Albury Parish Council chairman Mr. George Witheridge.

He declared that the insurance company were only prepared to cushion a certain percentage of the costs of the rebuilding work and the rest

stantial damage when a bus ended up embedded in the side of the building one icy morning earlier this year.

Since then major rebuilding work has been carried out. Although final estimates are still being sought, total costs are expected to be in the region of £25,000.

The chairman told fellow parish councillors at their meeting on Monday night that there was a shortfall of around £5,000. He said by adding an extra 3p in the £ on the parish

Hall mishap could lead to better village amenity

IT could be a "blessing in disguise" that a bus had crashed into Albury Village Hall, parish council chairman Mr. George Witheridge told the annual assembly of the parish meeting.

Mr. Witheridge was explaining how much work was to be done rebuilding the hall, and he told the gathering that the hall could look much better when it was finished.

In his chairman's report he recalled how the bus had embedded itself in the village hall one icy morning.

The hall was likely to remain out of commission until September, he said. The new lavatories had been lost in the accident, and the chairman said it was very depressing to think that all the work the village had put in to raise the money to pay for them and been brought to nothing.

The toilets were not being put back in their former position, but were being rebuilt at the side of the hall, which reduced the possibility of them being run into again, he said.

Architect, Mr. Foulsham, said the work was covered in the insurance, except for that which might be classed as "betterment."

As part of the rebuilding programme, the small porch at the front of the hall had been kept for use by people who could not climb the stairs, and a ramp had been built from the car park to the porch so that car passengers could get out in the car park instead of

on the road, Mr. Witheridge explained.

He congratulated the builder, Mr. Terry Kinsella, who had worked under the direction of the council's architect, Mr. John Foulsham.

Re-instatement of the front would cost around £10,000 by the time the foundations had been strengthened. Work had started on the replacement toilets, and the estimate for this was over £15,000, said Mr. Witheridge.

Until September, a minimum complement of loo facilities would be available for people using the hall, he said.

Around £5,000 of parishioners' money had been spent on salaries and wages; on looking after the green at Farley Green and the recreation ground at the back of Westonfields; a substantial contribution to the Parochial Church Council to help keep the graveyard around the church tidy; and the upkeep of the village hall, reported the chairman.

Councillors had been fairly successful in contacting the right people to get jobs done in the village — particularly the highways authority. Mr. Witheridge thanked the clerk, Mrs. Rosanna Collingwood, members of the parish council, and everyone who had supported the council in the past year.

Albury History Society
alburyhistory.org.uk

ALBURY VILLAGE HALL

1833 - 1979

SOME NOTES ON ITS HISTORY.

NOTES
ON
ALBURY VILLAGE HALL

1833 - 1979

The Hall was originally built as a Church of England School in 1833/34 and known as the Albury National School. Albury was then in the See of Winchester and the School was built on the last piece of Glebe Land, given by the then Bishop of Winchester, who gave permission for the School to be built.

Money for the building of the School was raised in various ways. The Bishop donated £10 and the Incumbent £20. Congregational collections were held which raised £35. 4s. 9d. and donations were received from local residents. The Treasury gave a grant of £60 and the National Society and the Risbridger Charities donated £56. and £2. 10s. 0d. respectively.

Labour costs on the building amounted to approximately £136. This sum included the wages of bricklayers - £79, Carpenters - £49, Blacksmiths - £3, and the wages of three labourers for four weeks and three days - £4. (The figures in each case are approximate).

A new floor was laid in 1839 at a cost of £10. 11s.

The School had two classrooms between which the children, 70 boys and 80 girls, were to be divided. The School playground was beneath the classrooms and had an earth floor. Pegs for the pupils' outdoor clothes and a stone sink may still be seen beneath the floor of the Hall.

The building was built on marsh land and proved to be damp. In about 1838 the Rector of Albury, the Revd. John Hooper, referred in a letter to the damp and mildew coming up through the floor. He campaigned for the removal of the School to Albury Heath which was elevated, dry and healthy.

The School, however, was not moved until 1894. The children then attended the new school on Albury Heath, given by the 7th Duke of Northumberland and built by workmen from the Albury Estates. This School, which was let to the School Governors, later called Managers, at an annual rental of £1, was closed in 1974.

In 1928, the Village Hall Trustees, appointed for the purpose, were granted a lease of the building as a Village Hall for 21 years. Two further leases of 21 and seven years respectively were subsequently granted by the Trustees of the Albury Estates, and a lease for a further 14 years has now been concluded.

* * * * *

HIRE CHARGES

	Local Users	Others
Weekdays (per hour)	£ 4	£ 6
Sats/Suns (per hour)	£ 5	£ 7

(Part hours are charged as full hours)

Weddings & Private Parties: *(whole day up to midnight)*

Weekdays	£50	£70
Sats/Suns	£65	£80

Jumble Sales	£30	£45
---------------------	-----	-----

Profit Making Functions (per day)	£80	£80
--	-----	-----

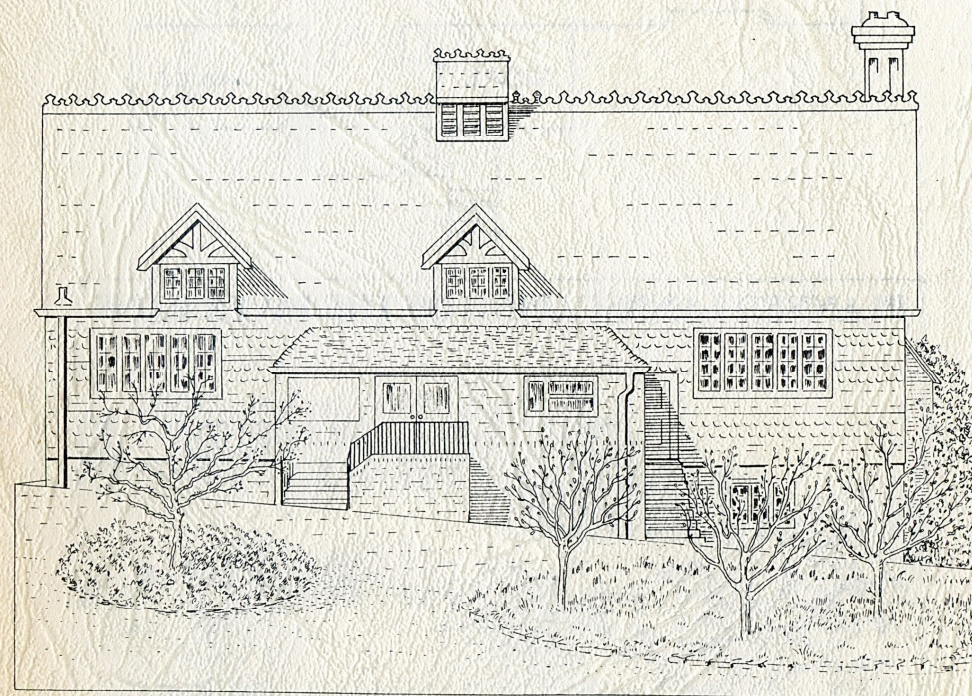
Also available to Local users *(and to others by special arrangement)* is the Maurice Burton Room: Weekdays £3 per hour, Sat/Sun £4.

A discount of 10% is allowed on six or more bookings for non-profitmaking functions made at one time. Special terms can also be arranged for bookings of several days' duration.

Prices include light, heat, use of kitchen and tables and chairs BUT NOT CLEANING: please leave the hall clean and tidy.

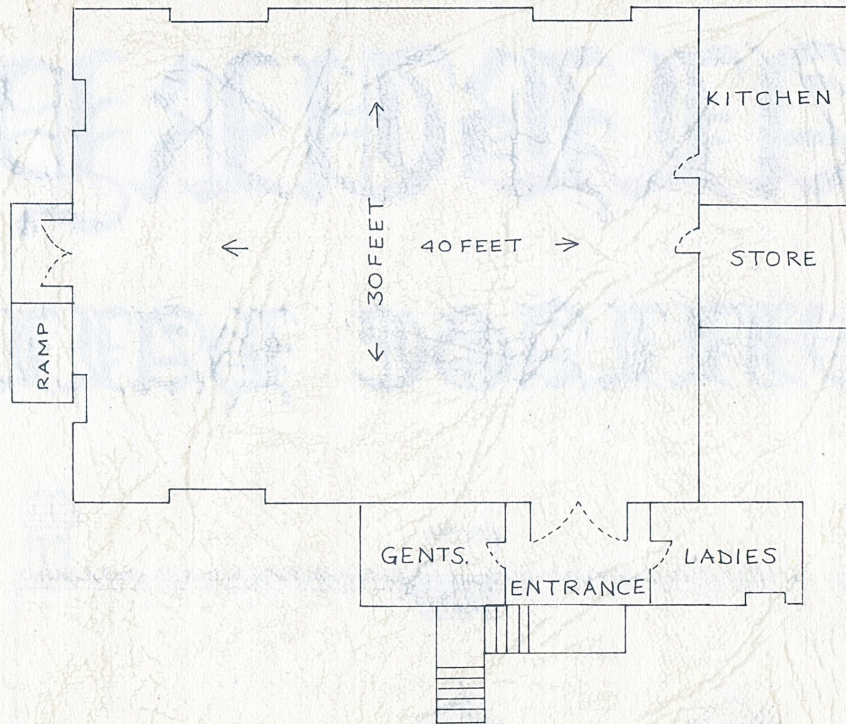
To make a booking, call CHRISTINE HOUGHEN at the Albury Estate Office (0483) 202323.

ALBURY VILLAGE HALL



- ★ Completely redecorated and refurbished
- ★ Car park, disabled access, fitted kitchen
- ★ Available for hire at competitive rates

LAYOUT OF THE HALL



PLANNED LANDSCAPING OF THE RIVER BANK



View as seen from the car park

In the historic village of Albury, situated in an area of outstanding natural beauty, our newly renovated and refurbished village hall offers an excellent venue for hire for every kind of function.

Outside we are landscaping the banks of the River Tillingbourne, and providing seating on a newly turfed area. Apart from enhancing the hall itself, this will also provide a perfect backdrop for special occasion photographs. The car park has been resurfaced, and can accommodate 40 cars.

Inside, the hall has bright new curtains and paintwork, also new flooring. The brand new fitted kitchen, with serving hatch to the hall, makes efficient catering easy. Alternatively, our village pub, The Drummond Arms, is just a few yards away and will bring in food by prior arrangement.

The hall can accommodate up to 100 people seated "theatre style", or 80 seated at tables for 8/10. We can provide you with the tables and chairs (most of them recently purchased). There will be a removable dais big enough to accommodate a projection screen with the speaker, or indeed a discotheque with D.J. There are ample electricity points for all such equipment.

Future planned acquisitions include darts, table tennis table, sound system and some visual aids. A picture rail has been installed around the room for art exhibitions.

Over the page you will find details of how much the hall will cost you to hire, and how to go about doing so.