



TREETOPS HOLIDAY CAMP

IN THE HEART OF THE SURREY PINETREE

Where "Treetops" is !

This delightful camp is situated on the edge of Winterfold Heath, forming a part of Hurtwood. It lies three miles south of the pretty village of Shere, which is mid-way between Dorking and Guildford.

"Treetops" accommodates a hundred guests; everything is arranged for the comfort of visitors and here is every facility for the ideal holiday, for the family, a party of friends, or for those who have to take their holidays alone; to these last it makes a special appeal, for "Treetops" is a place to find friends and kindred spirits. To all who desire a holiday of outdoor sports and activities, with jolly social evenings to complete the

perfect days and equally to those who seek quiet relaxation, "Treetops" makes its appeal.

MEALS

"Treetops" is a place where keen air and out-of-door recreation bring one back to meals with a real holiday appetite. We are well aware of this, and are confident that you will be more than pleased with the way the "Treetops" kitchen deals with this important problem. *Bring Ration Books and Tea Coupons* if your stay is five nights or longer (Emergency Ration Cards will then be unnecessary).

TREETOPS HOLIDAY CAMP

FARLEY GREEN, Nr. ALBURY
GUILDFORD :: SURREY

TELEPHONE SHERE 107



What is the Perfect Holiday ?

Age, inclination, **your** state of health will call for different answers. There are, however, certain essentials necessary to the success of any sort of holiday.

Good Food—here we can please you—tastily cooked, plenty of it, nicely served.

The Social Side. This is handled efficiently and with tact. There is plenty of fun, quiet or active; you are welcome to join in or relax—as you wish.

The Staff are all aware that efficiency, courtesy and a desire to please make their's a pleasant job and your's—The Perfect Holiday.

The Dining Room





Scenery and the Social Side:

"Treetops" has Both—

To our way of thinking, "Treetops" is just the right size: small enough to be intimate, large enough for a dance, a games afternoon, a moonlight hike or what you will.

Games, rambles, dances, river and coach trips are organised—usually by a committee of visitors presided over by our Social Manager, who has a fund of helpful suggestions.

The children are not forgotten. When there are enough of them, suitable games and events are arranged, but, speaking generally, the children are soon absorbed in high adventures on their own account, as the surrounding countryside is a safe and natural playground.

When the weather's that way you'll find welcome fires in the Recreation Hall and Dining Room.

TENNIS

TABLE-TENNIS

DANCING

SMALL BATHING POOL

Etc

Here you may bathe and
sun-bathe to your heart's content



"TREETOPS" HOLIDAY CAMP



**FARLEY GREEN
NEAR ALBURY
GUILDFORD - SURREY**

MEALS. Four meals per day are served, as follows:—

Breakfast	8.45	Dinner	...	1.00
Tea	...	Supper	...	6.30

Early morning tea can be obtained between 7.45 and 8.15 a.m. Light refreshments are available at 10 p.m. at moderate prices. No allowance can be made for meals taken outside the Camp, but we can provide picnic lunches for Visitors who go out for the day.

SLEEPING ACCOMMODATION is provided mainly in chalets pleasantly placed in wooded grounds, each adequately furnished and with electric light. There are a few bedrooms in the House, with extra comforts including washbasins with h. & c. water. Single accommodation is available, and in addition, chalets containing two, three and four single beds, according to size. Nearly all beds are equipped with comfortable Latex Foam mattresses.

We prepare your chalet for arrival, after which guests attend to the internal order of their own rooms.

LIBRARY AND SHOP. You can choose your holiday reading from a selection of books available, free of charge, to Visitors.

Ices, cigarettes, writing materials, etc., can be purchased from the Camp's small shop.

CARS AND MOTOR CYCLES. Accommodation for cars and motor cycles, including covered garage space, is available free of charge.

BOOKINGS. In the middle of the season, weekly bookings are normally from Saturday (to Tea) to Saturday (after Dinner), and we ask that Visitors do not arrive before 2 p.m. as their Chalets will not be ready before then. Also, Chalets must be vacated by 10 a.m. on the day of departure so that they may be prepared for incoming Visitors. Except in the middle of the season, bookings may be for less than a week, and may commence and terminate on any day of the week, and to any meal, as arranged. For example, a week's stay can be extended to 9 days—from Friday (to Supper) to Sunday (after Tea).

At most times, accommodation is available for week-ends, for which Treetops is ideal, and these can be, say, from Friday (to Supper) to Sunday (after Tea), or as arranged.

CHILDREN UNDER 3 YEARS. We will always endeavour to accommodate children under 3 years, but in view of their differing requirements, this must be by special arrangement. Parents must provide any special foods required, **and rubber sheets.**

DOGS. We appreciate that some of our Visitors like to bring their dogs, and we will accept them whenever possible. We cannot, however, always do this as their number must be limited. In any case, we have to ask that Visitors provide all food and dishes for their dogs.

TERMS. Inclusive terms will be found on the separate leaflet enclosed with this brochure.

BY POPULAR VOTE and for the benefit of all, the Recreation Hall closes at 11 p.m. (Fridays 11.30 p.m.), and we ask that the Camp shall be quiet after this hour, and in particular that no parties are held in chalets.

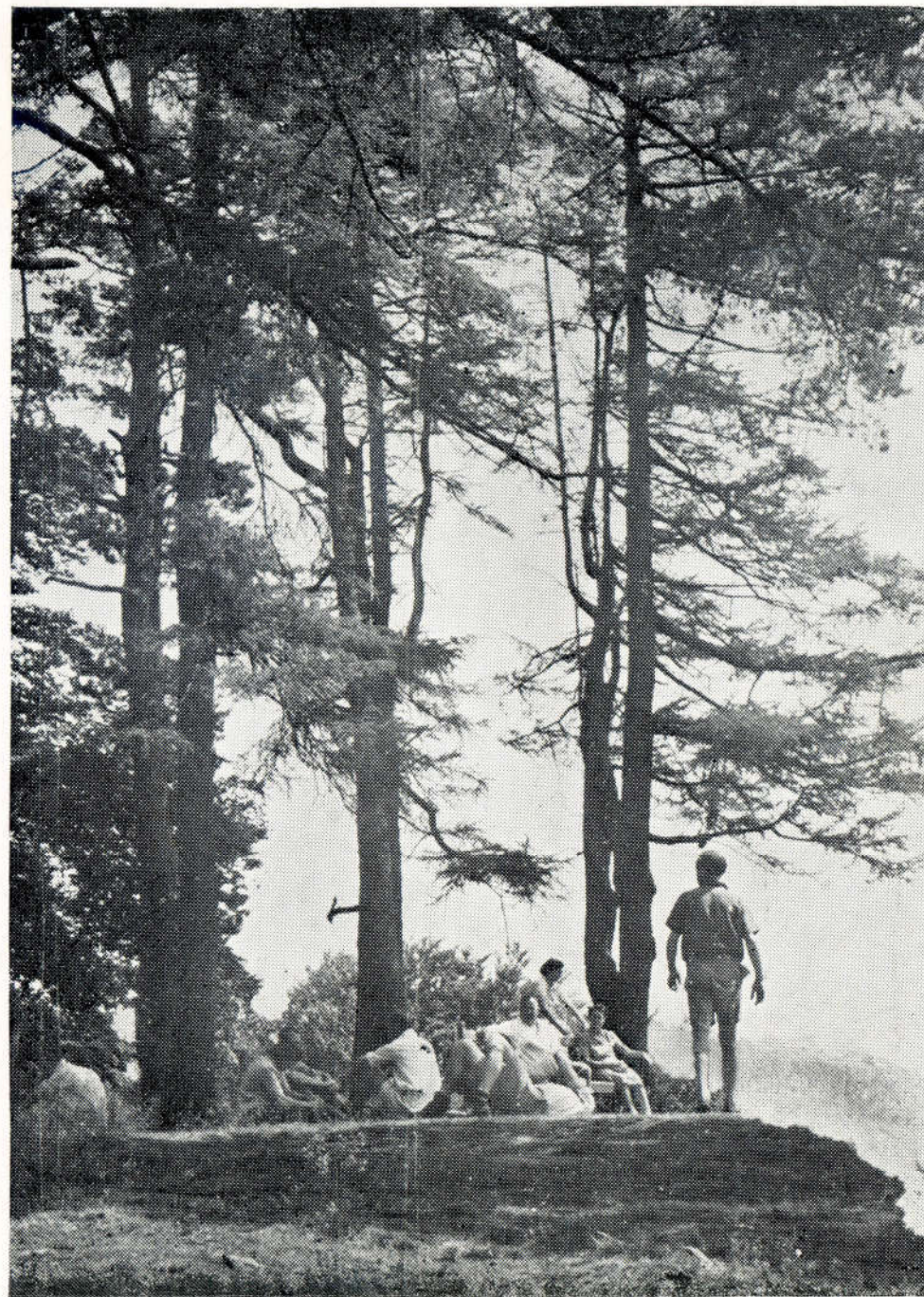
HOW TO GET TO TREETOPS. By Rail, to Guildford S.R. Station (from Waterloo, a 40 minute journey by fast train). From Guildford, by bus to Farley Green; the bus starts from the Farnham Road Bus Station (3 minutes' walk from Guildford Station) at 34 minutes past each hour (last bus 8.34 p.m.; Sunday service—10.34, 12.34 and then hourly to 8.34). Board the brown 'Tillingbourne Valley' bus marked Farley Green.

Farley Green Bus Stop is one mile from Treetops, but we have an arrangement with the Bus Company whereby, if passengers tell the conductor they are bound for Treetops, and there are six or more persons travelling from Guildford to the Camp, the bus will, on the passengers' request, come right up to Treetops. In practice, it seldom happens that our Visitors find themselves on a bus which does not take them right to the Camp; but should you find that your bus is not going beyond Farley Green Bus Stop, we can arrange on special request for a car to meet you at the Stop and bring you to Treetops (charge 1s. per person); for this, you should telephone us on arrival at Farley Green Bus Stop from the kiosk nearby. Alternatively, if you are walking from the bus, luggage can be left in a shed near the Stop, and we will collect it in the evening. The shed is immediately to the right after going through the gate near the telephone kiosk.

By Road, Treetops is 31 miles from London (Westminster Bridge), 31 miles from Brighton (Sea Front) and 9 miles from Guildford. The northern approach is from the Guildford-Dorking Road (A25-A248), and midway between Albury and Shere (villages on this road) is Albury Park Gates, $2\frac{1}{2}$ miles from Treetops. From the Gates, take the road signposted Farley Green. From the south, approach Treetops from Cranleigh or Ewhurst, both of which are about 4 miles distant.

LUGGAGE IN ADVANCE. This should bear your name and be addressed to "Treetops Holiday Camp, Farley Green, near Guildford, Surrey—**via Chilworth Station.**" Luggage is delivered to the Camp on the day, or the day following, its arrival at Chilworth Station.

DON'T FORGET TO BRING—Ration Book, Torch, Swimming Costume, Tennis Racquet and Shoes, Camera, Soap, Towels, Walking Shoes, Shoe Cleaning Materials and a Mackintosh.



The Morning Walk

